

# Pez León (*Pterois sp*)

Edoardo E. Antúnez  
BICA Utila



Bay Islands Conservation Association

Utila, Bay Islands, Honduras

# Taxonomía

- Familia Scorpaenidae
  - Subfamilia Pteroinae
    - *Pterois volitans*
    - *Pterois miles*



## Meristic Differences



	Indian: <i>Pterois miles</i>	Pacific: <i>Pterois volitans</i>
Dorsal Fin Rays	10	11
Anal Fin Rays	6	7
Pectoral Fin Size	Shorter	Longer
Spot Size	Smaller	Larger
Geographic Range	Africa – Indonesia	Indonesia – W Pacific



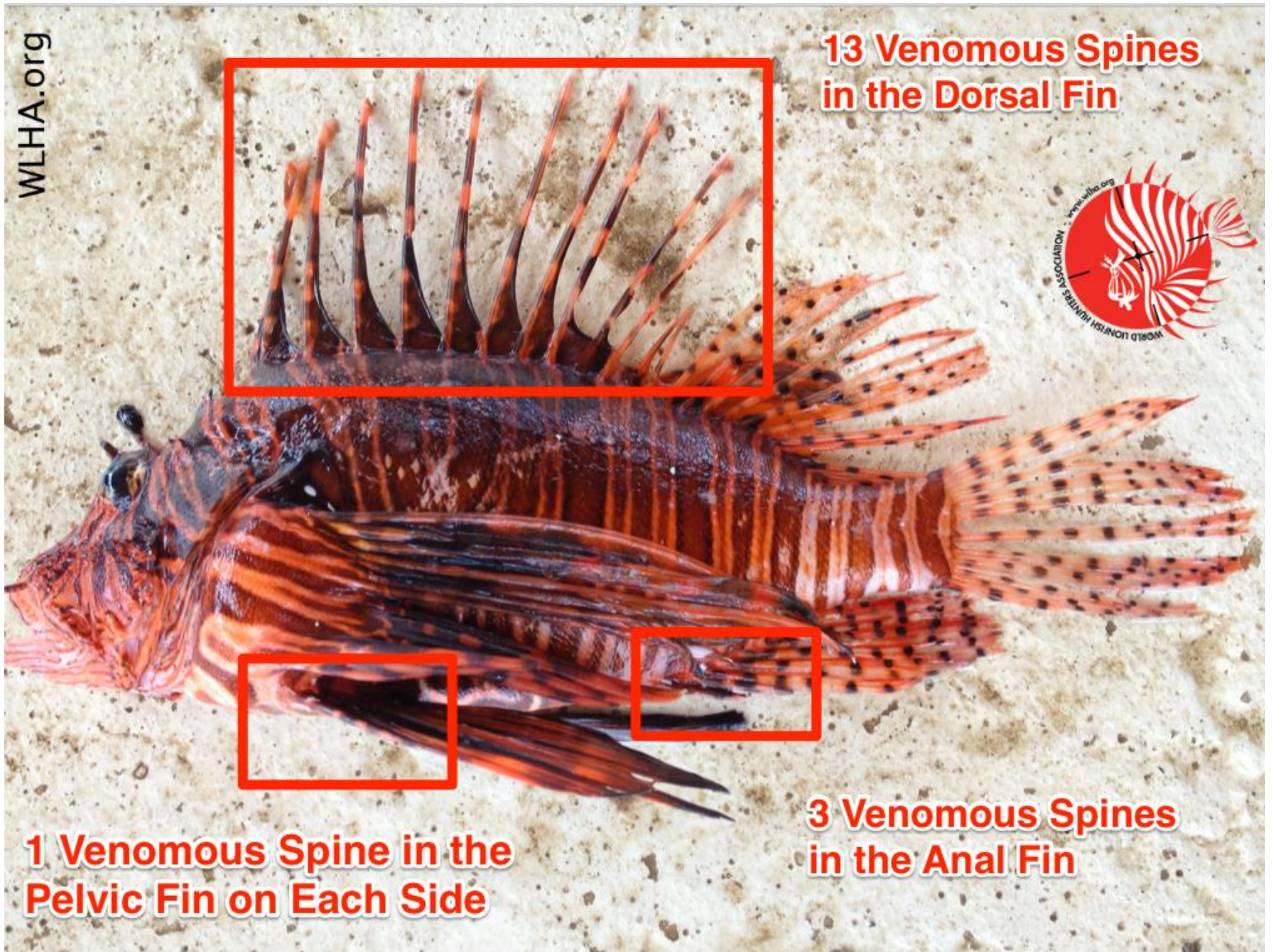
**13 Venomous Spines  
in the Dorsal Fin**



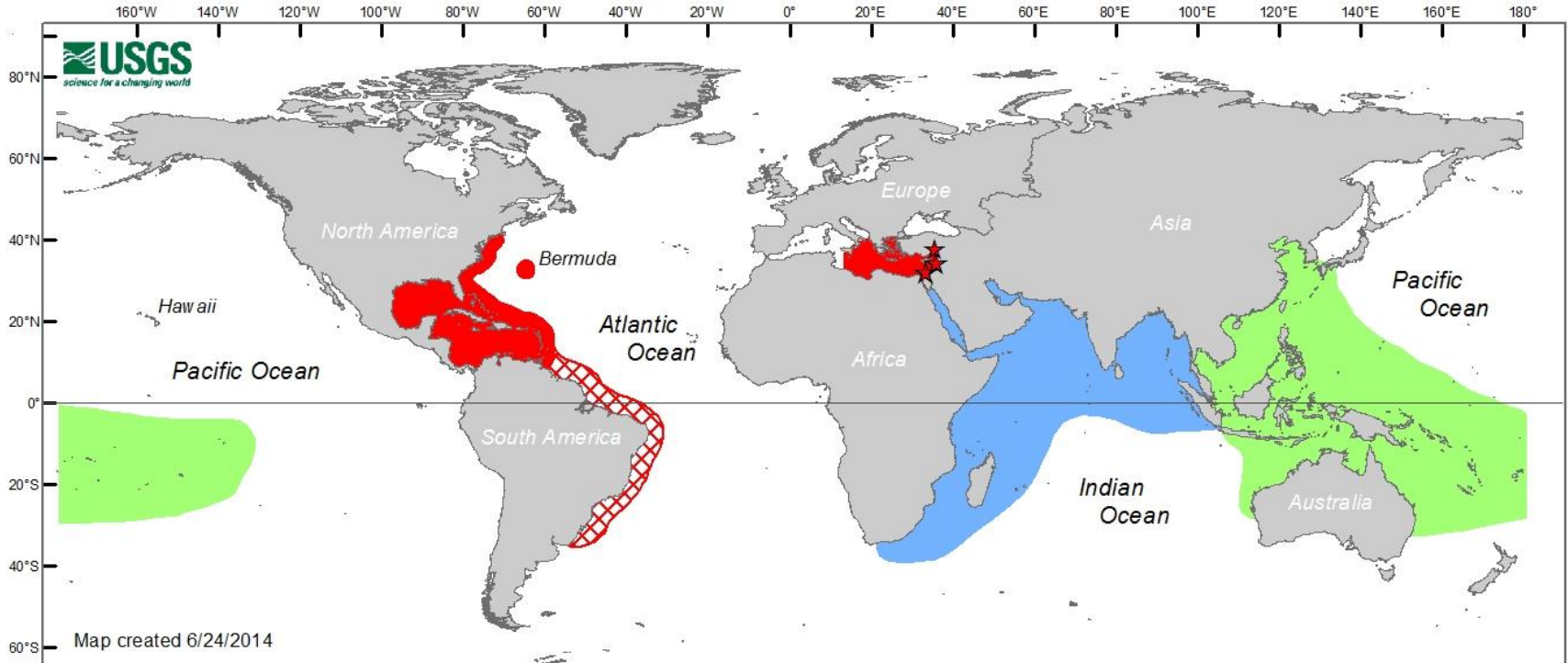
**1 Venomous Spine in the  
Pelvic Fin on Each Side**



**3 Venomous Spines  
in the Anal Fin**



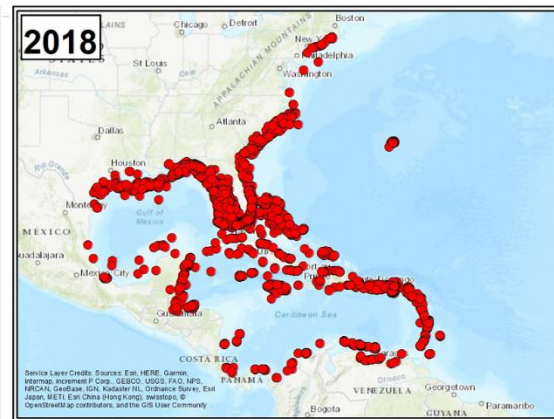
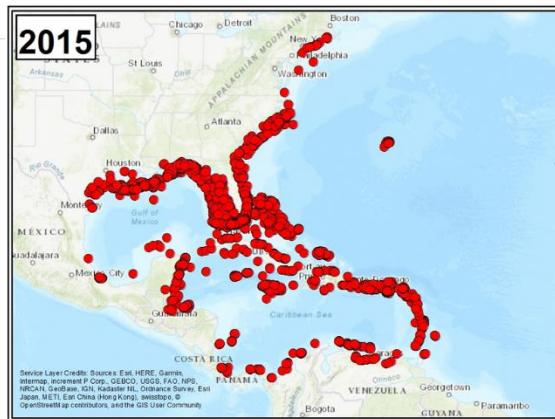
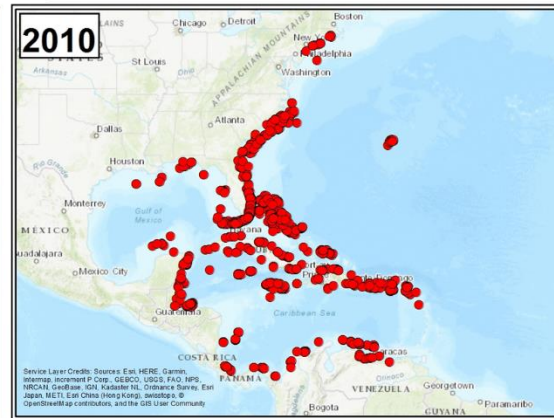
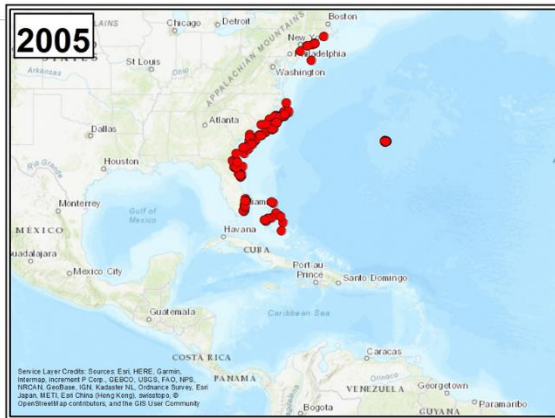
# Distribución



Map of native range of *Pterois volitans* (green) and *P. miles* (blue) adapted from Schultz (1986) and Randall (2005). Stars in Mediterranean Sea denote Lessepsian migration of *P. miles* via the Suez Canal (Golani and Sonin 1992; Bariche et al. 2013; Turan et al. 2014). Non-native range of *P. volitans* and *P. miles* in the Americas is shown in red (from Schofield et al. 2012). Predicted future distribution of lionfish along coastal South America is shown in red hatching (Morris and Whitfield 2009). Lionfish are continuing to expand westward in the Mediterranean Sea (red shading). See Azzurro et al. (2017) for a review.

# Invasión en el Atlántico





Fuente/Source: USGS Wetlands and Aquatic Research Center, Matthew Neilson, 2018.

# Hábitat

- Arrecife, lagunas, manglares, pastos, parches de arena
- Prefieren estructuras complejas en el fondo
- Territoriales y presentan fidelidad de sitio

# Dieta





# Reproducción





# INVASIVE LIONFISH BY THE NUMBERS

## BIOLOGY

**50,000**  
EGGS EVERY 3 DAYS

**1 YEAR**  
to maturity

**30 YEAR**  
LIFESPAN

**18**



venomous  
spines

## DISTRIBUTION

**17X**  
DENSITY in Atlantic  
vs. native Pacific range

REACH DEPTHS  
of **1,000** feet

**1985** year  
first  
found  
off  
Miami  
FL.



U.S. national marine  
sanctuaries invaded

- ① Monitor
- ② Gray's Reef
- ③ Florida Keys
- ④ Flower Gardens Banks

## CONTROL

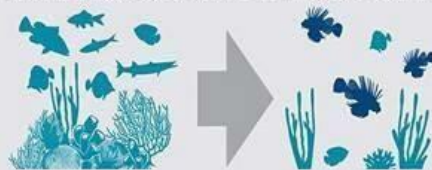
**164** **restaurants**  
SERVING  
LIONFISH

**51,420** lbs  
commercial lionfish caught in U.S.

**28,770** lionfish  
**REMOVED**  
during REEF sanctioned lionfish derbies

## IMPACTS

### INVASIVE SPECIES THREATEN CORAL REEFS



BEFORE INVASION

AFTER INVASION

**OVER 100**  
PREY FISH SPECIES

1,000 lionfish can consume

**5 MILLION**  
PREY FISH IN 1 YEAR



KNOWN PREDATORS

LEARN MORE & GET INVOLVED: <http://coastalscience.noaa.gov/research/pollution/invasive/lionfish>



**Bay Islands Conservation Association**

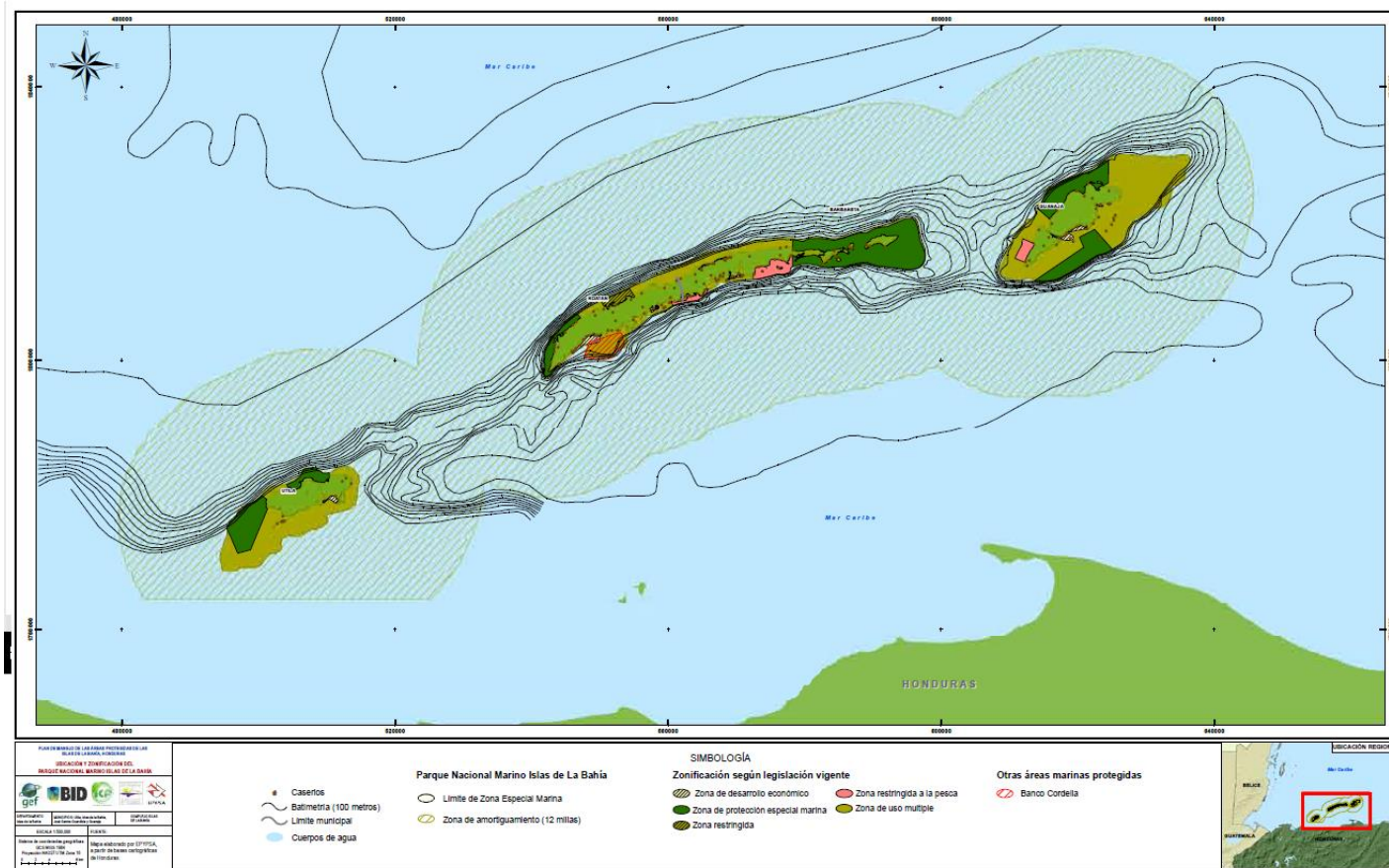
---

*Utila, Bay Islands, Honduras*

# Parque Nacional Marino Islas de la Bahía



PARQUE NACIONAL MARINO  
ISLAS DE LA BAHÍA



MAPA 1. MAPA DE UBICACIÓN PARQUE NACIONAL MARINO ISLAS DE LA BAHÍA.



 **Licencia para Caza de Pez León en Islas de la Bahía** 

 **Nombre:**  
ROCHELLE WRIGHT

**Numero del Arpon:**  
RW-UL181

**Emisión:** NOV 2017  
**Expiración:** NOV 2019

El portador de esta licencia ha completado exitosamente los requisitos para cazar el pez león buceando, basado en el plan de manejo del pez león en las Islas de la Bahía

 **Licencia para Caza de Pez León en Islas de la Bahía** 

BICA esta legalmente habilitado para coordinar los esfuerzos para la eliminación del Pez León en Utila, con el respaldo de DIGEPESCA.

*Esta licencia es propiedad de la Bay Islands Conservation Association, Capítulo de Utila y puede ser revocada por incumplimiento de las regulaciones.*

Autorizado por la Secretaría de Agricultura a través de la Dirección General de Pesca y Acuicultura (DIGEPESCA), en cooperación con la Bay Islands Conservation Association en Utila (BICA).

En caso de encontrar este documento, por favor traerlo a las oficinas de BICA, capítulo de Utila.  
Ubicada en la carretera al aeropuerto.

A stylized, semi-transparent illustration of a lionfish is centered in the background. The fish's body is light gray, and its spines are depicted with radiating lines. The pectoral fins are a light teal color, and the tail is a light pink color. The text is overlaid on this illustration.

*Lionfish Hunting*

# WORKSHOP

Saturday 27th January

9:00am @ BICA

Get licensed for the upcoming XI Lionfish Derby!  
Email [edo.antunez@gmail.com](mailto:edo.antunez@gmail.com) to reserve your spot

# dissection workshop lead by WSORC

*meet at Coral View  
4pm  
Saturday 07-07-2018*



Bay Islands Conservation Association  
Utila, Bay Islands, Honduras



WSORC

# LIONFISH DERBY









Supporting BICA 's XI Lionfish Cook-Off



Supporting BICA 's XI Lionfish Cook-Off



NEPTUNE'S  
AT CORAL BEACH VILLAGE



Supporting BICA 's XI Lionfish Cook-Off





---

# Depth-dependent effects of culling—do mesophotic lionfish populations undermine current management?

---

Dominic A. Andradi-Brown<sup>1,2</sup>, Rachel Grey<sup>2,3</sup>, Alicia Hendrix<sup>2</sup>, Drew Hitchner<sup>2</sup>, Christina L. Hunt<sup>1,2</sup>, Erika Gress<sup>2</sup>, Konrad Madej<sup>4</sup>, Rachel L. Parry<sup>4</sup>, Catriona Régnier-McKellar<sup>4</sup>, Owen P. Jones<sup>4</sup>, María Arteaga<sup>5</sup>,

---

<sup>1</sup>Department of Zoology, University of Oxford, The Tinbergen Building, South Parks Road, Oxford, OX1 3PS, UK

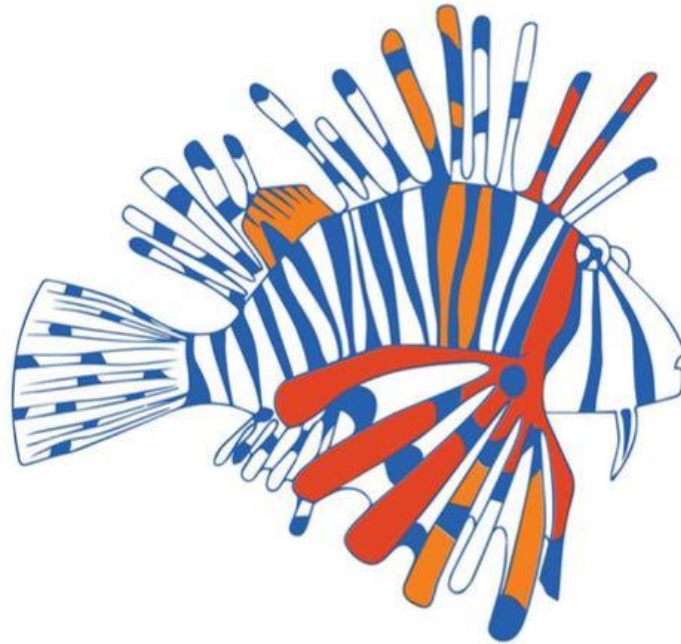
<sup>2</sup>Operation Wallacea, Wallace House, Old Bolingbroke, Spilsby, Lincolnshire PE23 4EX, UK

<sup>3</sup>College of Charleston, 205 Fort Johnson Road, Charleston, SC 29412, USA

<sup>4</sup>Whaleshark and Oceanic Research Center, Main Street, Utila, Bay Islands 34201, Honduras

<sup>5</sup>Bay Islands Conservation Association—Utila Chapter, Airport Road, Utila, Bay Islands 34201, Honduras

# Comité Nacional para el Manejo del Pez León



Comité Nacional de Manejo del

**PEZ LEÓN**

# Alternativas



# ¡Gracias!

